



Look Ahead:

Post-16 Choices in Doncaster

**A Guide to your options for
Post-16 Learning in Doncaster**



Find us on social media



Doncaster
Council



It's Your Choice in Doncaster

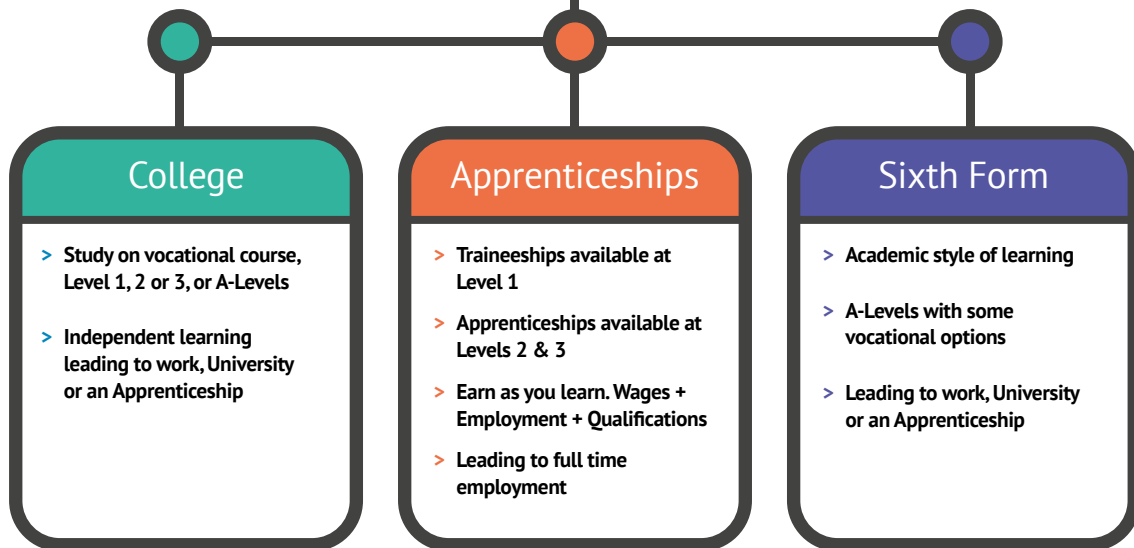
This leaflet is full of ideas to help you choose your post-16 options in Doncaster. You can:

- Find out what providers are available in Doncaster.
- Find out what courses are available in Doncaster.
- Find out what you need to think about when making your decision and who can help.

At some point in Year 11 you will have a decision to make about how you are going to continue your education after your GCSE exams. This is known as your Post-16 destination. The main options available to you include:

- **Apprenticeships** – After Year 11 there are two types of Apprenticeship that are available to you, Level 2: Intermediate (equivalent of 5 GCSEs) and Level 3: Advanced (equivalent of 2 A Levels). The Higher and Degree Level Apprenticeships are only eligible to you if you have a Level 3 qualification already. Apprentices in Doncaster earn around £170 a week, on average.
- **Sixth Form/6th form College** – Most sixth forms offer A-Levels, with some offering you the option to take BTECs or A Levels combined with BTECs.
- **College** – At college you are more likely to have to choose between a vocational course (focused on developing practical skills and technical knowledge needed for a particular career), like a BTEC, or choose to focus on academic options, such as A Levels.
- **Training Provision** – Local training provision is offered mainly by independent providers and is available at all levels – from Entry Level to Level 3. Options include study programmes and traineeships. Some providers also lead on the delivery of apprenticeships. This booklet includes a directory of some local providers and their websites.

Post 16 Options Year 11 GCSEs










You also have the option to apply for employment with accredited training or begin your work based learning with a Traineeship/Study Programme.

Each pathway will suit a different type of learner, have different entry requirements/ application processes and potentially shape your career in different ways. For example, this is a comparison between learning at College and sixth form.

continued >





	College	Sixth Form
 How long?	<ul style="list-style-type: none">> Two / three years depending on whether you start at Level 1, 2 or 3.	<ul style="list-style-type: none">> Two years of academic study at Level 3.
 What can I study?	<ul style="list-style-type: none">> Variety of vocational courses to choose from. New College Doncaster also offers A-Levels.> Students can focus on the subject area.> Many Colleges offer Apprenticeships and can help you find an employer to train with.> Each College offers different subjects and qualifications to choose from.	<ul style="list-style-type: none">> Variety of A-Levels with some Sixth Forms offering BTECs or other vocational qualifications.> Most Sixth Forms require students to study a variety of subjects, eg: three A-Levels or BTEC combined with two A-Levels.> Each Sixth Form offers different subjects and qualifications to choose from.
 Learning / Assessment	<ul style="list-style-type: none">> Vocational styles of learning with more emphasis on practical learning and coursework than academic study and exams.	<ul style="list-style-type: none">> Academic style of learning with exams and some coursework depending on subjects / qualifications.
 Work experience	<ul style="list-style-type: none">> Many courses at College have a work placement focus. One day per week of your course might be spent on work placement.	<ul style="list-style-type: none">> Some Sixth Forms offer a week or two week block of work experience.
 Entry requirements	<ul style="list-style-type: none">> Five GCSE's at grade 4 or above are the general entry requirements for Level 3 courses at College.> However students who don't meet the entry requirements for a Level 3 course may begin on a Level 2 or Level 1 course.	<ul style="list-style-type: none">> Five GCSE's at 4 or above are general entry requirements for Sixth Forms with some subjects having additional requirements.
 Where can it lead?	<ul style="list-style-type: none">> University, Apprenticeship, University Level course at College, access to University courses, full time employment.	<ul style="list-style-type: none">> After Sixth Form students can go to University, a Higher Apprenticeship, full time employment or Further Level Education at College.
 What's life like?	<ul style="list-style-type: none">> Independent learning environment, new teachers, new classmates, new location and travel arrangements.	<ul style="list-style-type: none">> More freedom / independence than school but still a familiar environment with teachers you already know and some of the students you already know.

This leaflet will help you explore each different option, find out what's available in Doncaster and crucially, **choose what you want for your future and make the next step that's right for you.**

Key points that you may want to consider:

- What subjects do I need to get the job I want in the future?
- Am I going on to university and if so, what subjects do I need to access the course that I want to do?
- What subjects am I good at and what do I enjoy?
- What is my learning style? Is an academic route (A Levels) or a more vocational/technical route (BTECs, Cambridge Technicals) right for me?
- Do I have the grades I need? Do I have a contingency plan if I don't meet my entry requirements?

Key things that you may want to do:

- Have a discussion with your careers advisor.
- Have a discussion with your parent/carer – what do they think?
- Attend some college/sixth form open days.
- Attend local careers events.
- Investigate apprenticeships available in the Doncaster area.
- Explore the Start Doncaster (www.startindoncaster.com) platform to find local apprenticeship opportunities, explore potential careers and match your skills with local courses..

If you are still not sure or if you feel that you need further guidance, your school will have a designated careers lead who will be able to advise you on where to access helpful resources and on what to consider in making a decision. You can also access the Start Doncaster platform to explore potential careers, courses and your post-16 options at: www.startindoncaster.com

All full-time Further Education (FE) courses are free to UK and EU residents aged 16-18 on 31 August in the first year of study.

If you are 16-18, there are no tuition or examination fees to pay.

Why Stay and Learn in Doncaster?

Doncaster is growing, vibrant and dedicated to developing a higher skilled, higher paid workforce. The past three years have seen a transformation in learning provision in the borough and significant economic growth, which has resulted in the **Doncaster area having a record employment rate of 73.9%**. Opportunities are available in:

- Health and Social Care (19,500 jobs)
- Retail (12,000 jobs)
- Manufacturing (11,500 jobs)
- Transport & Storage (11,000 jobs)

- Education (11,000 jobs)
- Business Administration & Support (10,500 jobs).
- Hospitality and Catering (7,500 jobs)
- Construction (6,500 jobs).

We also have a number of key growth sectors, which provide an exciting prospect for future employment in the borough, including:

- Advanced Engineering & Technology – e.g. rail innovation.
- Creative & Digital – e.g. TV and Film production.
- Advanced Transportation – for road, rail and aviation.
- Advanced Materials – for construction and manufacturing.
- Green Growth - technology and innovation for all sectors.

Doncaster is also a great place to learn. Your borough has invested in the creation of a new £14 million Doncaster Central Library and Museum, that is due to open in 2020 and we have impressive local learning assets like Cusworth Hall, Cast Theatre and the National College For Advanced Transport & Infrastructure. As well as this, we are working hard to establish Doncaster as a University City and develop a new model of Higher Education for the borough. As well as this, we have exciting plans for a Health and Social care campus at the Waterfront and a new Northern Centre for sustainability.



New Doncaster Central Library and Museum, opening 2020.



Cast Theatre, Doncaster



Cusworth Hall

A Note on Raising Participation

The government has increased the age to which all young people must continue in education and training to 18. This doesn't mean that you have to stay in school and it doesn't mean that you can't get a job. It does mean that you must continue to be in some form of learning until at least your 18th birthday.

So what are the options?

- Full time education (school, college or training provider)
- An apprenticeship or traineeship.
- Part-time education or training, when combined with employment or self-employment for 20 hours or more a week or volunteering for 20 hours or more a week.

School and College Post-16 Providers in Doncaster

Doncaster has a huge range of Post-16 learning providers, from the more traditional school sixth forms and sixth form colleges

offering academic qualifications, to colleges specialising in vocational provision. This leaflet contains a list of providers in Doncaster and what they offer.

The course lists are only indicative, and if providers don't get enough people interested they won't be able to run the course. It is worth contacting the provider before you apply to check that courses are still running. Ask if the course ran last year and how many people were on it, or how many people have applied so far. This can help predict how likely it is that the course will run this year.

Application Processes

Application processes vary from provider to provider so **it is a good idea to check each provider's website for their admissions procedures and deadlines. As a general rule, submission of your application for Post-16 study should be done before the end of December.** This will give you the best chance of attaining a place on the course of your choice. However, some providers will consider applications submitted after this date.

Map of Providers in Doncaster





Astrea Woodfields Academy: Sixth Form



Address: Astrea Academy Woodfields,
Weston Road, Doncaster, DN4 8ND

Website: astreawoodfields.org

Twitter: twitter.com/AAWoodfields

About us:

‘Always Ascending’

At Astrea Woodfields, 100% of pupils completed a Level 3 BTEC Extended Diploma in Sport and Exercise Science, all of whom achieved a minimum grade of DDD (Triple Distinction). At Astrea Academy Woodfields we have proudly claimed this accolade for the last two years.

We offer our students a **cohesive vocational curriculum** within the sectors of Sport, Science and Health and Social Care in a

dedicated Sixth Form facility with specialist and experienced staff. Our curriculum model allows students to flex between qualification levels and sizes allowing different course combinations. Moreover, we offer an exciting enrichment programme that provides students with opportunities to expand their studies into optional courses and qualifications in coaching, sports medicine and within other areas of health and wellbeing. Students can also become part of our very successful football team, where they will attend daily training sessions and play weekly fixtures against some of the top teams across the UK.

We offer our students a tailored pastoral curriculum of lessons and workshops in two programmes: Personal and Professional Development (PPD) and Careers and Finance Education (CFE) designed to support students into higher education or employment. On that, in 2018 and 2019, 100% of our students completed their studies and went into further or higher education or employment-based training. Some of our students even secured scholarships in the USA.

Core vocational curriculum

The standard entry requirements for our Sixth Form are a **Grade 4 or above in GCSE English Language and Mathematics and an average point score (APS) of 4.0 from GCSE/BTEC qualifications**. Students who achieve a Grade 3 in English Language and/or Mathematics may be able to join our Sixth Form and resit these qualifications. Students who achieve an average point score (APS) of 3.0-3.9 may also be able to join our Sixth Form. In both instances students should discuss this with the Sixth Form team.

Specific courses may have their own entry requirements above this.

Course	Level	Entry Requirements
Applied Science	Level 3 BTEC Extended Certificate Equiv. to 1 A Level	Standard entry requirements Grade 4s in GCSE Science (combined)
Health and Social Care	[Up to] Level 3 BTEC Extended Diploma Equiv. to 3 A Levels	Standard entry requirements Health and Social Care qualification at Level 2 would be desirable but not essential.

continued >

Course	Level	Entry Requirements
Sport	[Up to] Level 3 BTEC Extended Diploma Equiv. to 3 A Levels	Standard entry requirements. Sport / PE qualification at Level 2 would be desirable but not essential.
Sport and Exercise Science	[Up to] Level 3 BTEC Extended Diploma Equiv. to 3 A Levels	Standard entry requirements. Sport / PE qualification at Level 2 would be desirable but not essential.
The Extended Project Qualification (EPQ), optional	3	Standard entry requirements.

Additional (optional) vocational curriculum

Course/qualification costs can be discussed with the Sixth Form team.

Sports Massage Therapy	4 (Diploma)	There are no formal entry requirements.
Personal Training	3 (Certificate)	There are no formal entry requirements.
Exercise Referral	3 (Diploma)	There are no formal entry requirements.
Sports Massage Therapy	3 (Diploma)	There are no formal entry requirements.
Gym Instructing	2 (Certificate)	There are no formal entry requirements.

Do they share provision with other providers?

No

What Financial Support can I obtain to study here?

The Sixth Form operates a termly student bursary scheme for Sixth Form students, which provides some financial assistance for students from low income households to help support them with some of the costs associated with continuing in education.

The scheme is financed by funding from the Education Funding Agency and operates in accordance with their national guidelines.

Links with businesses and the local labour market

The Sixth Form has a comprehensive Careers Development programme working with our partners Careers Inc. and the DWP. During the programme students will:

- Visit colleges and universities to explore Post-18 study routes.
- Visit employers to explore Post-18 training routes.

- Have the opportunity for work experience in Year 12 and other work related learning opportunities to develop the 'soft skills' needed for successful employment.
- Have advice and guidance on writing CVs, applications and personal statements and interview skills.
- Have the opportunity to complete additional courses and qualifications in a variety of areas linked to their chosen career pathway.

The Sixth Form also offer a Personal Development programme working with our careers and community partners. During the programme students will:

- Work towards a leadership qualification to demonstrate leadership skills.
- Work with younger students, helping them with literacy and numeracy to develop coaching and mentoring skills.
- Develop 'soft skills', such as time management, communication and organisation skills.

Campsmount Academy



Address: Ryecroft Rd, Norton, Campsall,
Doncaster DN6 9AS

Website: www.campsmount.com/post16

Twitter: [twitter.com/@CampsmountAcad](https://twitter.com/CampsmountAcad)

About the Provider: Our Post 16 team are happy to offer an independent and supportive learning environment you will need to reach your full potential. Our aim is to develop you as a

leader of the future so you can progress onto the next pathway in your learning journey.

Outcomes for our students are highly important and we have made improvements across a much broader curriculum. Our website outlines our exciting range of subjects on offer in 2020. Making decisions about the future can be daunting, but with our prospectus information and the support and guidance Post 16 staff and your tutors provide during your time at Campsmount Post-16, you will be able to make informed decisions.

Our Post 16 facilities continue to be highly regarded by our students. They provide the perfect atmosphere to learn. You can enjoy your own catered cafeteria, access to the school's Wi-Fi, a large number of computers for private study and quiet areas to study, complete work and revise. These outstanding facilities coupled with the excellent teaching provided by our experienced staff is the perfect combination for your success.

If you would like to visit Campsmount to look at what we can offer you please contact the Head of Post 16, Miss Hudson.

Core vocational curriculum

To enter Post-16 Provision at Campsmount Academy, you will require at least 5 GCSEs at Grade 5 or above

Course	Level	Entry Requirements
Art	Level 3 – A Level	Grade 6 in GCSE Art
Biology	Level 3 – A Level	Grade 6 in GCSE Science
Chemistry	Level 3 – A Level	Grade 6 in GCSE Science
English Literature	Level 3 – A Level	Grade 6 in GCSE English Language; Grade 6 in GCSE English Literature
History	Level 3 – A Level	Grade 6 in GCSE History and/or GCSE English Language
Mathematics	Level 3 – A Level	Grade 7 in GCSE Mathematics
Core Mathematics	Level 3 – A Level	Grade 6 in GCSE Mathematics
Photography	Level 3 – A Level	Grade 6 or a Merit in GCSE Art and/or GCSE IT
Physics	Level 3 – A Level	Grade 6 in GCSE Science

continued >

continued >

Course	Level	Entry Requirements
Applied Science	Level 3	Grade 5 in GCSE Science
Business Studies	Level 3 – A Level	Grade 5 in GCSE Business Studies Desirable but not Essential
Performing Arts	Level 3 Diploma (equiv. 1.5 A Levels) Extended Diploma (equiv. 3 A Levels)	Merit in Level 2 Sport or Dance
Health and Social Care	Level 3 (equiv. 3 A Levels)	Health and Social Care at Level 2 would be advantageous. Ability to play an instrument or sing would be advantageous.
ICT	Level 3	Merit in OCR National
Media (Creative Digital Media Production)	Level 3	Grade 4 in GCSE English Language
Sport	Level 3 – BTEC Extended Diploma (equiv. 3 A Levels) also available	Level 3 – BTEC Extended Diploma (Equiv. 3 A Levels) also available Merit in Level 2 Sport

You can apply online at:

www.campsmount.com/page/?title=Apply+for+Post+16&pid=42

Do they share provision with other providers?

There are currently no courses that involve shared delivery with other providers. However, it is possible to enrol students on a part time basis and share course provision with other providers in light of individual needs.

What Financial Support can I obtain to study here?

Campsmount Academy operates a student bursary scheme for Sixth Form students, which provides some financial assistance for students from low income households to help support them with some of the costs associated with continuing in education.

The scheme is financed by funding from the Education Funding Agency and operates in accordance with their national guidelines.

For further information about the scheme and details of how to apply, visit this web page:
www.campsmount.com/page/?title=Bursary+Scheme&pid=38

Links with businesses and the local labour market

Campsmount Academy works in partnership with a number of local businesses and agencies to offer students excellent

CEIAG. Throughout their time at Campsmount, students have the opportunity to engage in a wide variety of activities that are designed and delivered in partnership with these professionals. All Year 12 students will take part in a two-week work experience programme in July of Year 12. Students find this invaluable when completing UCAS personal statements and CVs for employment.

Students are supported to complete their UCAS applications and have opportunities to explore the options that are available to them. Campsmount works in partnership with the HeppSY+ programme in order to ensure that every student at Campsmount is supported and takes the career path that is correct for them.

Campsmount Academy also runs an Aspire Day Programme. This is where normal timetables are collapsed for a day to facilitate imaginative new learning experiences. These are aimed at developing personal, social and emotional well-being as well as enabling our students to become responsible and caring citizens.

Doncaster Collegiate Sixth Form



Ash Hill / De Warenne / Don Valley / Rossington All Saints
The Laurel / St Wilfrid's

Address: Jossey Lane, Doncaster DN5 9DD

Website: www.csix.ac.uk/

Twitter: twitter.com/CollegiateSixth

About the Provider: At Doncaster Collegiate Sixth Form, we believe our commitment to high standards continues to ensure all our students reach their potential with whatever skills they possess. There are no barriers to achievement in this Sixth Form and teachers, parents and students work together to create an unbeatable team with one common goal – the best possible success for every child.

Our staff are highly qualified and dedicated professionals with a diverse range of talents and skills. They all work tirelessly to support the education of the children and young people in the Sixth Form.

We have a strong tradition of success that is built upon a firm foundation of strong pastoral care. We believe that every young person is capable of exceeding our expectations and that a climate of order and security, focused on achievement, ensures their success. In recent years our successes have been recognised by many organisations, commending us time and time again on the progression of our Students to Russell Group Universities and prestigious Apprenticeships.

At Doncaster Collegiate Sixth Form, we are committed to teamwork. We believe that by our Sixth Forms working together we can ensure success for everyone. Every young person has unlimited potential, it is our duty to tap into that reservoir of talent so that everyone achieves their best.

Perhaps the best way to get a true flavour of our Sixth Form is to visit and see us in action

Core vocational curriculum

Course	Level	Entry Requirements
Pre-Apprenticeship Sport	Entry to Level 2	None stipulated – This course is designed to prepare students for employment within the industry
Pre-Apprenticeship Leisure	Entry to Level 2	None stipulated – This course is designed to prepare students for employment within the industry
Pre-Apprenticeship Business	Entry to Level 2	None stipulated – This course is designed to prepare students for employment within the industry
Pre-Apprenticeship Railway	Entry to Level 2	None stipulated – This course is designed to prepare students for employment within the industry

continued >

continued >

Course	Level	Entry Requirements
Pre-Apprenticeship Hair	Entry to Level 2	None stipulated – This course is designed to prepare students for employment within the industry
Pre-Apprenticeship Beauty	Entry to Level 2	None stipulated – This course is designed to prepare students for employment within the industry
Pre-Apprenticeship Retail and Customer Services	Entry to Level 2	None stipulated – This course is designed to prepare students for employment within the industry
Pre-Apprenticeship Hospitality and Catering	Entry to Level 2	None stipulated – This course is designed to prepare students for employment within the industry
Pre-Apprenticeship General Employment Preparation	Entry to Level 2	None stipulated – This course is designed to prepare students for employment within the industry

What financial support can I obtain to study here?

Bursary Funds (Discretionary)

Students who can evidence a household income of less than £32,000 may be eligible for support towards the cost of their course related costs i.e. travel, childcare & kit/uniform etc.

Free Meal Entitlement

Students who meet one of the set eligibility criteria are eligible to free school dinners

Do they share provision with other providers?

Yes, the Sixth Form works in a collegiate nature with other Delta Academies.

Links with businesses and the local labour market

Local and National Employers and Industry specialist training providers.



Doncaster College



Provider detail

Doncaster College and University Centre, part of DN Colleges Group, are the largest provider of Apprenticeships and Further Education programmes in our region. Winner of the Best Further Education College 2019 in the What Uni, Student Choice Awards. The College offers both vocational and academic courses to help students progress into their chosen career. Working closely with local, regional and national companies, students benefit from access to industry insights, including work experience both nationally and internationally, guest speakers and sector workshops. In addition to an individual programme of study, students can get involved in a wide range of enrichments to help develop their potential and work towards their dream job.

Based at The Hub campus, students can expect to access specialist equipment in purpose-built facilities on a wide

Address: The Hub, Chappell Drive, Doncaster DN1 2RF

Website: www.don.ac.uk/

Twitter: twitter.com/DonnyCollege?ref_src=twsrc%5Egoogle%7Ctwcamp%5Eserp%7Ctwgr%5Eauthor

Facebook: en-gb.facebook.com/doncastercollege



range of levels. With 95% of our students going onto a positive destination following support from tutors who are industry specialists.

Doncaster College offers a substantial range of Apprenticeships, please visit the following link to find out more: <https://www.don.ac.uk/apprenticeships/> -

We have over 80 career pathways for you to choose from.

Entry Requirements

The list is a general guide to GCSE entry requirements. However particular pathways (e.g. catering) do have additional criteria which are stated on the college website.

- **Level 1 – GCSE Grade 2 or below**
- **Level 2 – GCSE Grade 3 or below**
- **Level 3 – GCSE Grade 4/5 or above.**

Course	Level	Entry Requirements
AAT Accounting / Bookkeeping	Level 1/2/3	See the above guide for each level and the Doncaster College Website
Air Cabin Crew	Level 2	See the above guide for each level and the Doncaster College Website
Animal Care/ Management	Level 1/2/3	See the above guide for each level and the Doncaster College Website
Animation, Special Effects and Media	Level 3	See the above guide for each level and the Doncaster College Website

continued >

continued >

Course	Level	Entry Requirements
Art and Design - Fashion	Level 2/3	See the above guide for each level and the Doncaster College Website
Art and Design - Photography	Level 2/3	See the above guide for each level and the Doncaster College Website
Art, Design and Media	Level 1/2/3	See the above guide for each level and the Doncaster College Website
Aviation Environment	Level 2	See the above guide for each level and the Doncaster College Website
Beauty Therapy	Level 1/2/3	See the above guide for each level and the Doncaster College Website
Body and Spa Therapy	Level 3	See the above guide for each level and the Doncaster College Website
Business Studies	Level 2/3	See the above guide for each level and the Doncaster College Website
Childcare - Caring for Children	Entry Level / Level 1	See the above guide for each level and the Doncaster College Website
Childcare - Early Years Education and Care/ Early Years Educator	Level 1/2/3	See the above guide for each level and the Doncaster College Website
Complementary Therapies	Level 3	See the above guide for each level and the Doncaster College Website
Computing	Level 3	See the above guide for each level and the Doncaster College Website
Construction – Brickwork / Carpentry and Joinery / Plastering / Plumbing	Level 1/2	See the above guide for each level and the Doncaster College Website
Construction – Multi Trade	Entry Level	See the above guide for each level and the Doncaster College Website
Construction – Painting and Decorating	Level 1	See the above guide for each level and the Doncaster College Website
Construction and the Built Environment	Level 3	See the above guide for each level and the Doncaster College Website
Creative Media Production & Technology (Film, Animation and Graphics)	Level 2/3	See the above guide for each level and the Doncaster College Website
Creative Media Production (Media Graphics)	Level 2/3	See the above guide for each level and the Doncaster College Website

continued >



continued >

Course	Level	Entry Requirements
Creative Media Production and Technology (Games Development)	Level 1/2/3	See the above guide for each level and the Doncaster College Website
Digital Skills	Level 1	See the above guide for each level and the Doncaster College Website
Engineering - Electrical	Level 1/2/3	See the above guide for each level and the Doncaster College Website
Engineering - Mechanical	Level 1/2/3	See the above guide for each level and the Doncaster College Website
Fabrication and Welding	Level 1/2	See the above guide for each level and the Doncaster College Website
Film and Television Production	Level 3	See the above guide for each level and the Doncaster College Website
Floristry	Level 2/3	See the above guide for each level and the Doncaster College Website
Hair and Media Make Up	Level 2	See the above guide for each level and the Doncaster College Website
Hairdressing	Level 1/2/3	See the above guide for each level and the Doncaster College Website
Health and Social Care	Level 1/2/3	See the above guide for each level and the Doncaster College Website
Hospitality Industry	Level 1	See the above guide for each level and the Doncaster College Website
Hospitality Supervision and Leadership	Level 3	See the above guide for each level and the Doncaster College Website
ICT Professional Competence – Networks and Security / Programming	Level 2	See the above guide for each level and the Doncaster College Website
ICT System Support	Level 2/3	See the above guide for each level and the Doncaster College Website
Land Based	Level 1	See the above guide for each level and the Doncaster College Website
Motor Vehicle	Entry Level / Level 1/2/3	See the above guide for each level and the Doncaster College Website
Music Practice / Technology	Entry Level / Level 1/2/3	See the above guide for each level and the Doncaster College Website
Motor Vehicle	Level 1/2/3	See the above guide for each level and the Doncaster College Website

continued >

continued >

Course	Level	Entry Requirements
Performing and Production Arts – Acting / Dance / Musical Theatre	Level 3	See the above guide for each level and the Doncaster College Website
Professional Cookery / Culinary Skills	Level 1/2/3	See the above guide for each level and the Doncaster College Website
Sport and Physical Activity	Level 1/2/3	See the above guide for each level and the Doncaster College Website
Travel and Tourism	Level 1/2/3	See the above guide for each level and the Doncaster College Website
Uniformed / Public Services	Level 1/2/3	See the above guide for each level and the Doncaster College Website

What financial support can I obtain to study here?

Bursary Funds (Discretionary)

Students who can evidence a household income of less than £32,000 may be eligible for support towards the cost of their course related costs i.e. travel, childcare & kit/uniform (16-19 students only).

Guaranteed Bursary (16-19 students only)

Students who meet one of the set criteria are eligible for a Guaranteed Bursary of £35 a week to help with the cost of their course related costs.

Free Meal Entitlement

Students who meet one of the set eligibility criteria are eligible to receive £3.20 a day to contribute towards the costs of their meals whilst in College.

Doncaster College also has a Talented Athlete Scholarship Scheme and a National Citizenship Service scheme.

The college run funded international trip through ERASMUS funding to support social mobility.

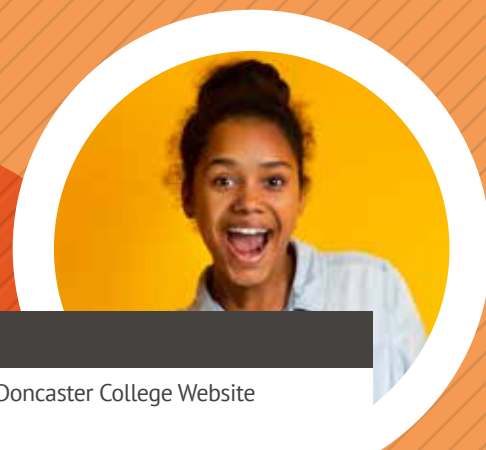
Do they share provision with other providers?

Yes – Doncaster College collaborates closely with providers in the borough, particularly in the centre of Doncaster, to augment the learning experience for its students.

Links with businesses and the local labour market

- All of the vocational courses listed have strong links with employers and every learner carries out work experience for at least one week both nationally and internationally – many leading to employment.
- The local labour market informs the courses that are offered to ensure that the right courses are offered and some of the employers, stakeholders we collaborate with are:
- Doncaster Chamber of Commerce (representing a much larger number of smaller employers).
- Club Doncaster
- 360 Degree Media
- Armed Forces
- Wabtec Rail Limited
- Volker Rail
- Doncaster Council
- NHS Doncaster and Bassetlaw Teaching Hospitals
- Sheffield City Region
- Keepmoat Homes
- Sheffield Hallam University
- National College for Advanced Transport and Infrastructure.

For more information, check out the Doncaster College website at www.don.ac.uk/



Doncaster University Technical College (UTC)



Address: Doncaster University Technical College (UTC),
College Road, Doncaster (To Open in September 2020
– the new academic year)

Website: www.doncasterutc.co.uk/

Twitter: twitter.com/doncaster_utc @doncaster_utc

Facebook: www.facebook.com/utcdoncaster/

About the Provider:

The Doncaster University Technical College (UTC) offers:

- The opportunity to study technical specialisms working with some of Doncaster's most successful businesses.

- Access to real work and experience in key sectors including Rail, Construction and Infrastructure, Advanced Manufacturing and Digital Design.
- Learning in an exciting and new environment that is different to a mainstream school.
- Excellent teaching and great school support as the UTC is part of the Brighter Futures Learning Partnership Trust.

Students can choose to follow one of two core pathways at the Doncaster UTC: **A Levels and Engineering**. As well as this, students can study for extended technical qualifications in Creative, Media and Digital and IT.

The standard entry tariff at Doncaster UTC is **5 GCSE passes at grade 4 or above or A*-C or equivalent, including Maths and English**. Specific courses have their own entry requirements above this.

Courses you can study

A Level Pathway

Course	Level	Entry Requirements
Chemistry	Level 3 – A Level	Grade 6 in GCSE Chemistry/Double Science and a Grade 6 in GCSE Maths
Computer Science	Level 3 – A Level	Grade 6 in GCSE Computer Science
Further Mathematics	Level 3 – A Level	Grade 6 in GCSE Maths
Mathematics	Level 3 – A Level	Grade 6 in GCSE Maths
Physics	Level 3 – A Level	Grade 6 in GCSE Physics/Double Science and a Grade 6 in GCSE Maths
National Extended Certificate in Engineering	Level 3 – Cambridge Technical (equiv. 1 A Level)	Standard Entry Criteria
Mathematics	Level 3 – AS Level (Year 12)	Standard Entry Criteria
Geography	Level 3 – A Level	Standard Entry Criteria
English Literature	Level 3 – A Level	Standard Entry Criteria
Business Studies	Level 3 – A Level	Standard Entry Criteria
Biology	Level 3 – A Level	Grade 6 in GCSE Physics/Double Science and a Grade 6 in GCSE Maths

Engineering Pathway (To include four hours a week devoted to employer-led projects).

Course	Level	Entry Requirements
National Foundation Diploma in Engineering	Level 3 – Cambridge Technical (One year programme, equiv. 1.5 A Levels)	Standard Entry Criteria
National Extended Diploma in Engineering	Level 3 – Cambridge Technical (Two year programme, equiv 2 A Levels).	A minimum of 5 Grade 4s at GCSE, including English, Maths and Science
Extended Project Qualification	Level 3 - EPQ	Standard Entry Criteria
IT Cambridge Technical	Level 3 – Cambridge Technical (equiv. 3 A Levels).	Standard Entry Criteria
Digital Media Cambridge Technical	Level 3 – Cambridge Technical (equiv. 3 A Levels)	Standard Entry Criteria

Do they share provision with other providers?

Yes – The University Technical College (UTC) will be part of a Doncaster Central collaboration known as DC6.

Links with businesses and the local labour market

The UTC pledges that 40% of all learning time will be spent on studying technical specialisms. The curriculum focuses on real work-related, employer driven projects for learning to be relevant to potential careers, with a pledge for targeted CEIAG provision throughout the learner's school career but especially at points of transition (Y10/11, Y12/13).

Employers featured include:

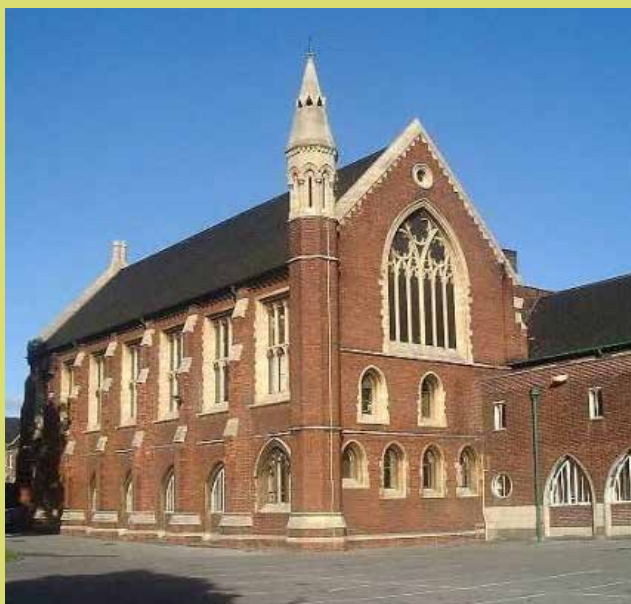
- Doncaster Chamber of Commerce (representing a large number of smaller employers).
- Doncaster College
- University of Sheffield
- Wabtec Rail Limited
- Agemaspark
- Volker Rail
- Doncaster Council

- Hitachi Rail Europe
- NHS Doncaster and Bassetlaw Teaching Hospitals
- Sheffield City Region
- Polypipe
- Keepmoat Homes
- Sheffield Hallam University
- National College for Advanced Transport and Infrastructure.
- Frog
- Pennine Stone Limited
- Unipart Rail
- Engie
- Skanska
- AMRC.

To enable A-Level students to benefit from industry experiences, bespoke projects will be woven into sections of each of the A-Level courses. Students will be able to complete work across different subjects to see how learning is applied in the world of work.



Hall Cross Academy



Address: Hall Cross Upper School, Thorne Road,
Doncaster DN1 2HY
Website: www.hallcrossacademy.co.uk/sixthform
Twitter: twitter.com/dcsixthform
Facebook: facebook.com/dcsixthform

HALL CROSS ACADEMY

EST 1350

SIXTH FORM

Provider Details:

At Hall Cross, students will benefit from small class sizes, sixth form specialist teaching and an excellent enrichment programme. Over half of our students join us from other schools and we are perfectly sized to offer you a wide range of courses whilst supporting you as an individual. Our historic building is inspirational and our investment in new facilities and the digital learning environment mean you get the best of both worlds. All of this support leads to very good results and destinations data; the attainment of our students is very high in both A-Levels and Applied subjects. Our central location means Hall Cross students get the advantages of a town centre experience including great transport links and better work experience opportunities. In addition, our partnership working means, whatever your chosen pathway, you will have genuinely excellent levels of support at Hall Cross.

Entry requirements:

Our minimum entry requirement are a Grade 5 in English Language and Mathematics plus four further subjects at Grade 4.

Course	Level	Entry Requirements
Art	Level 3 – A Level	Grade 6 in GCSE Art
Biology	Level 3 – A Level	Grade 5 English Language, Grade 6 in Maths and Grade 6 in Biology, or 6-6 in Combined Science with a 7 in maths
Business	Level 3 – A Level	Grade 5 in English Language and Grade 6 in a humanities subject
Chemistry	Level 3 – A Level	Grade 5 English Language, Grade 6 in Maths and Grade 6 in Chemistry, or 6-6 in Combined Science with a 7 in maths
Computer Science	Level 3 – A Level	Grade 5 English Language, Grade 6 Maths and Grade 6 in Computer Science
Dance	Level 3 – A Level	Grade 5 in English Language or Literature and relevant experience
Drama	Level 3 – A Level	Grade 6 in English Language or Literature and relevant experience
Economics	Level 3 – A Level	Grade 6 in English Language or Literature and Grade 6 in Maths
English Language	Level 3 – A Level	Grade 5-6 in English Language and Literature
English Literature	Level 3 – A Level	Grade 5-6 in English Language and Literature
Film Studies	Level 3 – A Level	Grade 5 in English Language or Literature
French	Level 3 – A Level	Grade 6 in French and Grade 5 in English
Geography	Level 3 – A Level	Grade 5 English Language, Grade 6 Geography and a Grade 5 in Maths

continued >

continued >

Course	Level	Entry Requirements
Government and Politics	Level 3 – A Level	Grade 6 in English Language or Literature.
Graphic Design	Level 3 – A Level	Grade 6 in an Art subject at GCSE.
Health and Social Care	Level 3 – A Level	Grade 5 in English.
History	Level 3 – A Level	Grade 5 English Language and Grade 6 in History.
Maths	Level 3 – A Level	Grade 7 in Maths.
Further Maths	Level 3 – A Level	Grade 8 in Math.
Music	Level 3 – A Level	Grade 6 in GCSE Music plus a Grade 4 on relevant instrument.
Philosophy and Ethics	Level 3 – A Level	Grade 6 in English Language or Literature
Photography	Level 3 – A Level	Grade 6 in a GCSE Art subject
Physical Education	Level 3 – A Level	Grade 5 English Language, Grade 6 PE and Grade 5 Science, must be currently playing a competitive sport to a high level
Physics	Level 3 – A Level	Grade 5 English Language, Grade 6 Maths and Grade 6 in Physics or Grade 6-6 in Combined Science with a 7 in Maths
Product Design	Level 3 – A Level	Grade 6 in a Technology subject at GCSE
Psychology	Level 3 – A Level	Grade 5 English Language, Grade 5 Maths and Grade 5-5 in Combined Science
Sociology	Level 3 – A Level	Grade 6 in English Language or literature
Spanish	Level 3 – A Level	Grade 6 in Spanish and Grade 5 in English
Textiles	Level 3 – A Level	Grade 6 in a GCSE art subject
Business Single	Level 3 – BTEC Diploma	Grade 5 in English language
IT Double	Level 3 – BTEC Diploma	Grade 5 in ICT plus Grade 5 English Language and Mathematics
Sport Science Single	Level 3 – BTEC Diploma	Grade 5 in English Language and Mathematics
Applied Science Double	Level 3 – BTEC Diploma	Grade 5 in a science subject plus a Grade 5 in English and Mathematics
Extended Project	Level 3 – EPQ	Grade 5 in English language

Do they share provision with other providers?

Yes - Hall Cross will be part of a Doncaster Central collaboration.

Links with businesses and the local labour market

All Year 12 students have the opportunity to do a work placement and our partnerships include:

- CAST theatre and our Performing Arts Department
- The NHS through our unique Foundation School for Health status
- Engineering and Digital Media companies through our partnership with other central providers in Doncaster.

- Top Legal and Professional career networking through our partnership with the Linacre Institute

What financial support can I obtain to study here?

Students can apply for the 16-19 Bursary Fund and we support students on Free School Meals. In addition, an Enhanced Bursary and Discretionary Bursary are also available. Hall Cross works with a range of university widening participation schemes such as SOAMS and through our work with the Fulbright Commission we have had a lot of success in securing full scholarships to American colleges.



The McAuley Catholic High School: Sixth Form



Address: The McAuley Catholic High School,
Cantley Lane, Doncaster DN3 3QF.
Website: mcauleysixthform.org.uk
Twitter: twitter.com/McAuleySch
Facebook: facebook.com/McAuleySch
Instagram: instagram.com/mcauleyhighschool

Provider Details:

The McAuley Catholic High School welcomes students from all social, religious and non-religious backgrounds, providing exceptional pastoral support and an adult learning environment, supported by a purpose-built sixth form centre.

We pride ourselves on having happy and involved students and we support them through 1:1 mentoring, flexible starts and

finishes to the school day and a work experience programme. We also offer over 30 Level 3 qualifications and a Level 2 Foundation Year Course, as well as a wide range of extra-curricular opportunities including British sign Language and fantastic Performing Arts and Music Provision including, amongst other groups, a full orchestra.

Our exam results are consistently very good, with our vocational subject results averaging a distinction and our A Level grades averaging B-C in recent years. Our students progress on to a range of positive destinations after study, which has included successful applications for Oxford and Cambridge, Russell Group Universities, competitive courses and apprenticeships with high-profile organisations (including the NHS) and local businesses.

Entry requirements:

Our minimum entry requirement are a Grade 5 in English Language and Mathematics plus four further subjects at Grade 4.

Courses you can study

Course	Level	Entry Requirements
Applied Science	Level 3 – A Level	Level 5s in GCSE Combined Science, Mathematics and English Language.
Art	Level 3 – A Level	Level 5 or above in GCSE Art
Biology	Level 3 – A Level	A grade 6 or above in GCSE Biology and a grade 5 or above in GCSE Mathematics <i>or</i> Two grade 6's or above in GCSE Combined Science and a grade 5 or above in GCSE Mathematics.
Sport	Level 3 - BTEC	Level 5 or above in GCSE Physical Education written exam <i>or</i> Merit or above in BTEC Sport Level 2.
Business Studies	Level 3 – Cambridge Technical	5 GCSEs passes at level 4 or above including Level 4 or above in English and Level 4 or above in Maths.
Chemistry	Level 3 – A Level	A grade 6 or above in GCSE Chemistry and a grade 5 or above in GCSE Mathematics OR two grade 6's or above in GCSE Combined Science and a grade 5 or above in GCSE Mathematics

continued >

continued >

Course	Level	Entry Requirements
Computer Science	Level 3 – A Level	A Level 5 or above in Maths.
Core Maths AS (1 year)	Level 3 – AS Level	This is ideally suited to students who studied Higher tier Mathematics in Year 11 who secured a minimum of Level 5.
Criminology	Level 3 – A Level	GCSE grade 5 or above in Maths and English.
Digital Media	Level 3 – Cambridge Extended Certificate	This course is ideally suited to students who studied the Cambridge Nationals in Creative iMedia at GCSE level and have met the minimum requirements for study at A level (min 5 GCSEs at L4 or above inc English and Maths)
Drama and Theatre Studies	Level 3 – A Level	Drama GCSE or equivalent Performing Arts qualification. Experience in performance desirable.
Economics	Level 3 – A Level	GCSE Level 5 or above in Maths and Level 5 or above in English (Language or Literature)
English Language	Level 3 – A Level	Level 5 or above in English Language and Level 5 or above in English Literature at GCSE.
English Literature	Level 3 – A Level	Level 5 or above in English Language and Level 5 or above in English Literature at GCSE.
English Combined	Level 3 – A Level	Level 5 or above in English Language and Level 5 or above in English Literature at GCSE.
Film Studies	Level 3 – A Level	5 GCSEs passes at level 4 or above including Level 4 or above in English and Level 4 or above in Maths.
Food Science and Nutrition	Level 3 – A Level	A minimum Level 4 in a food related subject. If not studied at GCSE level then Level 4 in a relevant subject such as sport or Health and Social Care. Pupils will also need a minimum Level 4 in Science.
French	Level 3 – A Level	L5 (or above) in GCSE French.
Further Mathematics	Level 3 – A Level	Level 8 or above in GCSE Mathematics. All students taking Further Mathematics must also take Mathematics in a separate block.
Geography	Level 3 – A Level	A minimum of a Level 5 in either English Literature or English Language and a grade 5 in Geography.
German	Level 3 – A Level	Level 5 or above in GCSE German
Government and Politics	Level 3 – A Level	A Level 5 in English (Lang or Lit) or Level 5 in History if studied.
Health and Social Care	Level 3 – Cambridge Technical Extended Certificate	GCSEs in sciences at level 4 or above; Level 4 or above in both Maths and English.
History	Level 3 – A Level	A minimum of level 5 in GCSE History. If History not taken at GCSE level then Level 5 or above would be required in both English Language and English Literature

continued >



continued >

Course	Level	Entry Requirements
Level 2 Foundation Year Programme (inc GCSE Maths and/or English, Employability Skills, Work Experience, Careers Guidance + other extra-curricular qualifications)	1 Level 2	This programme is for students who are yet to secure the Level 2 grades required to progress to Level 3 studies or apprenticeships.
Mathematics	Level 3 – A Level	Level 6 or above. Students with a Level 6 must attend compulsory extra after-school lessons throughout Y12 in order to bridge the gap between GCSE and A Level.
Music	Level 3 – A Level	Level 6 or above in GCSE Music. Approval required from the curriculum leader if not studied at GCSE level.
Performing Arts	Level 3 - BTEC National Certificate (Year 12) Level 3 - BTEC National Extended Certificate (Year 13)	Drama GCSE or equivalent Performing Arts/Music Technology/Media qualification. Experience in performance or technical theatre desirable.
Philosophy and Ethics	Level 3 – A Level	Minimum of Level 5 in Religious Studies and at least Level 5 in English Language at GCSE level.
Photography	Level 3 – A Level	GCSE Photography Level 6 or above. Approval from the curriculum leader will be required for those who did not study Photography at GCSE level.
Physics	Level 3 – A Level	A grade 6 or above in GCSE Physics and a grade 5 or above in GCSE Mathematics OR two grade 6's or above in GCSE Combined Science and a grade 5 or above in GCSE Mathematics.
Production Arts	Level 3 - BTEC National Certificate (Year 12) Level 3 - BTEC National Extended Certificate (Year 13)	Drama GCSE or equivalent Performing Arts/Music Technology/Media qualification. Experience in performance or technical theatre desirable.

continued >

continued >

Course	Level	Entry Requirements
Psychology	Level 3 – A Level	Minimum of level 5 in English (Lit or Lang) and level 5 in Science and/or Mathematics at GCSE. Students DO NOT need to have studied Psychology at GCSE level, although this would be advantageous. Students who have studied GCSE Psychology would be expected to have a minimum level 6.
Sociology	Level 3 – A Level	Minimum of level 5 in English Language. Students DO NOT need to have studied Sociology at GCSE level.
Spanish	Level 3 – A Level	L5 (or above) in GCSE Spanish.
Technology (Product Design)	Level 3 – A Level	Grade 5 or higher in GCSE Design & Technology or with approval of curriculum Leader if Technology not previously studied.
Tourism	Level 3 – Applied Diploma	5 GCSEs passes at level 4 or above including Level 4 or above in English and Level 4 or above in Maths.

Do they share provision with other providers?

There are currently no courses that involve shared delivery with other providers. However, it is possible to enrol students on a part time basis and share course provision with other providers in light of individual needs.

What financial support can I obtain to study here?

In addition to the 16 – 19 Bursary and free school meals, which is available to all post 16 students who meet certain eligibility criteria, students are encouraged to apply for and are supported

in their applications for a range of scholarships available by universities and other academic or charitable organisations.

Links with businesses and the local labour market

Y12 students have a 1 week work experience programme in the summer term and McAuley works closely with a number of local businesses, schools, organisations including the NHS and Doncaster Chamber. Students on the Level 2 Foundation Year have 1 day per week work experience with those listed above as well as in-school.



New College Doncaster



Address: New College Doncaster, Hurst Lane, Auckley, Doncaster DN9 3HG

Website: www.ncdoncaster.ac.uk/

Twitter: twitter.com/ncdoncaster

Facebook: facebook.com/ncdoncaster

About the Provider: New College Doncaster provides a distinctive young adult experience for students – a stepping-stone from school to university. We are small enough to ensure that we really get to know students and provide all the support they need. We are large enough to offer a very wide range of A Level courses and a significant number of level 3 applied general qualifications as an alternative. We are an academic provider who also specialises in level 3 qualifications, helping students to progress to the very best universities and jobs. Our teachers are post-16 specialists, supporting the college's very strong A level and BTEC results in 2019. The college is likely to be oversubscribed in September 2020 and we encourage applicants to apply as early as possible. We hope to meet you at one of our open events - details can be found on the college's website.

Core vocational curriculum

Course	Level	Entry Requirements
Accounting	Level 3 – A Level	Grade 4 English Language and Grade 6 Maths plus minimum average GCSE point score of 4.5
Art	Level 3 – A Level	Grade 5 English Language and Grade 6 in a creative subject or merit in BTEC
Biology	Level 3 – A Level	Grade 5 English Language and Grade 6 Maths, Grade 6 in Biology or 6-6 in Combined Science plus minimum average GCSE point score of 5.6 (or a 7 in Maths)
Business	Level 3 – A Level	Grade 4 English Language and Grade 5 Maths plus minimum average GCSE point score of 4.5
Chemistry	Level 3 – A Level	Grade 5 English Language and Grade 6 Maths, Grade 6 in Chemistry or 6-6 in Combined Science plus minimum average GCSE point score of 5.6 (or a 7 in Maths)
Computer Science	Level 3 – A Level	Grade 4 English Language, Grade 6 Maths and Grade 6 in Computer Science plus minimum average GCSE point score of 5.6
Drama & Theatre Studies	Level 3 – A Level	Grade 5 in English Language. Grade 5 in a Performing Arts subject, or a Merit in BTEC and an audition.
Economics	Level 3 – A Level	Grade 5 English Language and Grade 6 Maths plus minimum average GCSE point score of 5.0
English Language/ Literature Combined	Level 3 – A Level	Grade 5 English Language or Grade 5 English Literature plus minimum average GCSE point score of 4.5
English Literature	Level 3 – A Level	Grade 5 English Language and Grade 5 English Literature plus minimum average GCSE point score of 4.5
French	Level 3 – A Level	Grade 6 English Language and Grade 6 French plus minimum average GCSE point score of 5.6 (or a 7 in French)

continued >

continued >

Course	Level	Entry Requirements
Geography	Level 3 – A Level	Grade 5 English Language, Grade 6 Geography and a Grade 4 in Maths plus minimum average GCSE point score of 5.0
Geology	Level 3 – A Level	Grade 4 English Language, Grade 5 Maths and Grade 5 Science plus minimum average GCSE point score of 5.0
Graphic Design	Level 3 – A Level	Grade 4 English Language and Grade 5 in a creative subject or a merit in BTEC
History	Level 3 – A Level	Grade 5 English Language and Grade 6 History (if studied) plus minimum average GCSE point score of 5.0
Law	Level 3 – A Level	Grade 5 English Language plus minimum average GCSE point score of 4.5
Maths	Level 3 – A Level	Grade 4 English Language and Grade 6 Maths plus minimum average GCSE point score of 5.6 (or a 7 in Maths)
Further Maths	Level 3 – A Level	Grade 4 English Language and Grade 8 Maths plus minimum average GCSE point score of 5.6
Media	Level 3 – A Level	Grade 5 English Language or Grade 5 English Literature plus minimum average GCSE point score of 4.5
Music	Level 3 – A Level	Grade 5 English Language, Grade 6 Music or a distinction in BTEC (if studied) and Grade 5 standard in practical and theory
Photography	Level 3 – A Level	Grade 4 English Language and Grade 5 in a visual arts subject or a merit at BTEC
PE	Level 3 – A Level	Grade 4 English Language, Grade 5 PE and Grade 5 Science, must be currently playing a competitive sport plus minimum average GCSE point score of 4.5
Physics	Level 3 – A Level	Grade 5 English Language, Grade 6 Maths and Grade 6 in Physics or Grade 6-6 in Combined Science plus minimum average GCSE point score of 5.6 (or a 7 in Maths)
Physics	Level 3 – A Level	Grade 5 English Language, Grade 6 Maths and Grade 6 in Physics or Grade 6-6 in Combined Science plus minimum average GCSE point score of 5.6 (or a 7 in Maths)
Politics	Level 3 – A Level	Grade 5 English Language plus minimum average GCSE point score of 5.0
Psychology	Level 3 – A Level	Grade 5 English Language, Grade 5 Maths and Grade 5-5 in Combined Science plus minimum average GCSE point score of 4.5
Religion, Ethics and Philosophy	Level 3 – A Level	Grade 5 English Language plus minimum average GCSE point score of 4.5
Sociology	Level 3 – A Level	Grade 5 English Language plus minimum average GCSE point score of 4.5
Spanish	Level 3 – A Level	Grade 6 English Language and Grade 6 Spanish plus minimum average GCSE point score of 5.6 (or a 7 in Spanish)
Textiles and Fashion Design	Level 3 – A Level	Grade 4 English Language and a Grade 5 in a visual arts subject or a merit at BTEC
Business Extended Certificate	Level 3 - BTEC	Grade 4 in English Language and Grade 4 Maths plus minimum average GCSE point score of 3.5
Creative Digital Media Extended Certificate	Level 3 - BTEC	Grade 4 in English Language plus minimum average GCSE point score of 3.5



continued >

Course	Level	Entry Requirements
Criminology WJEC Diploma	Level 3 - WJEC	Grade 4 in English Language and a minimum GCSE points score of 4.0
Digital Games Production Extended Certificate	Level 3 – BTEC (equiv. 1 A Level)	Grade 4 in English Language plus minimum average GCSE point score of 3.5
Health & Social Care Extended Certificate	Level 3 – BTEC (equiv.1 A Level)	Grade 4 in English Language plus minimum average GCSE point score of 3.5
Health & Social Care Diploma	Level 3 – BTEC (equiv. 2 A Levels)	Grade 4 in English Language and Grade 4 Science plus minimum average GCSE point score of 3.5
Health and Social Care Extended Diploma	Level 3 – BTEC (equiv. 3 A Levels)	
IT Extended Certificate	Level 3 - OCR	Grade 4 in English Language plus minimum average GCSE point score of 3.5
Law (Applied) Extended Certificate	Level 3 - BTEC	Grade 4 in English Language plus minimum average GCSE point score of 3.5
Medical Science WJEC Diploma	Level 3 - BTEC	Grade 4 in English Language, Grade 4 Maths and Grade 5 Science plus minimum average GCSE point score of 3.5
Music Extended Certificate	Level 3 – BTEC	Grade 4 in English Language and a Grade 4 (or merit) in Music (if studied) plus minimum average GCSE point score of 3.5
Performing Arts (Acting) Extended Certificate	Level 3 – BTEC	Grade 4 in English Language (and an audition) plus minimum average GCSE point score of 3.5
Performing Arts (Dance) Extended Certificate	Level 3 – BTEC	Grade 4 in English Language (and an audition) plus minimum average GCSE point score of 3.5
Psychology (Applied) Extended Certificate	Level 3 - BTEC	Grade 4 English Language, Grade 4 Maths and Grade 5 Science plus minimum average GCSE point score of 3.5
Public Services Diploma	Level 3 – BTEC (equiv. 2 A Levels)	Grade 4 in English Language plus minimum average GCSE point score of 3.5
Public Services Extended Diploma	Level 3 – BTEC (equiv. 3 A Levels)	Grade 4 in English Language plus minimum average GCSE point score of 3.5
Science (Applied) Extended Certificate	Level 3 - BTEC	Grade 4 in English, Grade 4 in Maths and 5 in Science plus minimum average GCSE point score of 3.5
Sport Extended Certificate	Level 3 – BTEC	
Sport Diploma	Level 3 – BTEC (Equiv. 2 A Levels)	Grade 4 in English Language and 4 in PE or merit at BTEC (if studied) plus minimum average GCSE point score of 3.5
Sport Extended Diploma	Level 3 – BTEC (Equiv. 3 A Levels)	

Do they share provision with other providers?

Part of the New Collaborative Learning Trust, which has 3 large sixth form colleges in the South Yorkshire and West Yorkshire region.

What financial support can I obtain to study here?

Students can apply for the 16-19 Bursary Fund & Free School Meals. In addition, an Enhanced Bursary and Discretionary Bursary are also available. New College Doncaster work in partnership with a range of university widening participation schemes and the Linacre Institute to support students intending to apply for the most competitive university places.

Links with businesses and the local labour market

New College Doncaster works with a number of external partners to provide a wide range of options to give students experience of employment. These include:

- Mock interviews
- Industry visits
- Local industry information tutorials
- Apprenticeship guidance
- Careers fairs
- Careers mentoring
- Work experience and shadowing

All students, regardless of their course, will have experience with employers as well as developing key transferable employability skills, which we embed into our curriculum. Each subject will offer a number of meaningful encounters, either via visiting speakers or through visits to workplaces.



Outwood Adwick and Outwood Danum



Address: Outwood Academy Adwick: Outwood Academy Adwick, Windmill Balk Ln, Woodlands, Doncaster DN6 7SF.

Outwood Academy Danum: Outwood Academy Danum, Armthorpe Rd, Doncaster DN2 5QD.

Website:

Adwick: www.adwick.outwood.com/post-16-overview

Danum: www.danum.outwood.com/post16overview

Our overarching criteria for learners to join our Post 16 centres is a willingness to learn. Alongside this, we will, as a guide, use KS4 Attainment 8 scores to support students in making their overall course choices, including the number of Post 16 courses to study

We reserve the right to amend our course offer based on available resources. The Principal reserves the right to not accept an application into Key Stage 5 if a student is deemed not to have met this entry requirement. All external applicants will be subject to appropriate references from their respective schools.

Entry Requirements

A willingness to learn

Course	Level	Entry Requirements
Art and Design - Graphics	3	Please see 'A willingness to learn' (above) and contact the provider to learn more.
Art and Design - Photography	3	Please see 'A willingness to learn' (above) and contact the provider to learn more.
Art and Design / Art	3	Please see 'A willingness to learn' (above) and contact the provider to learn more.
Biology	3	Please see 'A willingness to learn' (above) and contact the provider to learn more.
Business Applied	3	Please see 'A willingness to learn' (above) and contact the provider to learn more.
Chemistry	3	Please see 'A willingness to learn' (above) and contact the provider to learn more.
Child Development	3	Please see 'A willingness to learn' (above) and contact the provider to learn more.
Criminology	3	Please see 'A willingness to learn' (above) and contact the provider to learn more.
Drama	3	Please see 'A willingness to learn' (above) and contact the provider to learn more.
Engineering (Double)	3	Please see 'A willingness to learn' (above) and contact the provider to learn more.
English	3	Please see 'A willingness to learn' (above) and contact the provider to learn more.

continued >

continued >

Course	Level	Entry Requirements
English Literature	3	Please see 'A willingness to learn' (above) and contact the provider to learn more.
Forensic Science	3	Please see 'A willingness to learn' (above) and contact the provider to learn more.
French	3	Please see 'A willingness to learn' (above) and contact the provider to learn more.
Further Maths	3	Please see 'A willingness to learn' (above) and contact the provider to learn more.
Geography	3	Please see 'A willingness to learn' (above) and contact the provider to learn more.
Government and Politics	3	Please see 'A willingness to learn' (above) and contact the provider to learn more.
Health and Social Care	3	Please see 'A willingness to learn' (above) and contact the provider to learn more.
Health and Social Care (Double)	3	Please see 'A willingness to learn' (above) and contact the provider to learn more.
History	3	Please see 'A willingness to learn' (above) and contact the provider to learn more.
IT - Vocational	3	Please see 'A willingness to learn' (above) and contact the provider to learn more.
Mathematics	3	Please see 'A willingness to learn' (above) and contact the provider to learn more.
Media Studies	3	Please see 'A willingness to learn' (above) and contact the provider to learn more.
Medical Science	3	Please see 'A willingness to learn' (above) and contact the provider to learn more.
Music	3	Please see 'A willingness to learn' (above) and contact the provider to learn more.
Physics	3	Please see 'A willingness to learn' (above) and contact the provider to learn more.
Psychology	3	Please see 'A willingness to learn' (above) and contact the provider to learn more.
Science	3	Please see 'A willingness to learn' (above) and contact the provider to learn more.
Sociology	3	Please see 'A willingness to learn' (above) and contact the provider to learn more.
Spanish	3	Please see 'A willingness to learn' (above) and contact the provider to learn more.
Sport	3	Please see 'A willingness to learn' (above) and contact the provider to learn more.
Sport (Double)	3	Please see 'A willingness to learn' (above) and contact the provider to learn more.

Do they share provision with other providers?

Outwood Post 16 Doncaster is an established collaboration between Outwood Academy Adwick and Outwood Academy Danum that allows us to offer students a significantly broader range of qualifications across both sites.

Where students are required to study at both sites buses are provided to facilitate movement between the sites.

Links with businesses and the local labour market

- 1 week work experience for all students at the end of Y12
- Sixth Form Futures Fair - UCAS Personal Statement Support, Study Skills, Gap Year and No Idea, Apprenticeships, Employer Stands, HE Providers

- Year 13 1-2-1 Personal Statement/Careers Support
- Sixth Form Guidance guest speakers for Year 12 Managing Heavy Workloads and coping with deadlines, Interview Skills, ISUINI4U, Accommodation, Student Finance, Studying at a Research Intensive University, Apprenticeships non-university route, CV's and employers session, Study Skills, Mental Wellbeing
- Homerton College Cambridge Workshop
- AMRC Recruitment sessions, University Summer Schools, UCAS Fairs, Taster sessions (Engineering), University visits to study Law, Medicine etc. throughout the year.



Ridgewood School



Address: Ridgewood School, Barnsley Road, Scawsby, Doncaster DN5 7UB

Website: www.ridgewoodschool.co.uk/sixthform

Regular updates and communications available at: www.ridgewoodschool.co.uk/sixthformupdates

Provider Details:

The carefully selected courses students take at Ridgewood allow for excellent progression beyond sixth form. Over 90% of our students go on to study at university, with one in three gaining a

place at a prestigious Russell Group university and the vast majority securing their first choice of university. Increasing numbers of our students also successfully achieve placements on very competitive Higher Degree Apprenticeships. Alongside their lessons, students have access to a range of opportunities including leadership and mentoring programmes, internships, travel experiences, personalised support, careers guidance, and The Duke of Edinburgh's Award to name but a few. These can only be found in our unique environment, which combines high academic standards and enrichment to enable the development of our students into truly rounded individuals.

Courses Offered:

Courses on offer include a wide range of academic A level and Level 3 vocational courses which can be selected to create a personalised study programme. Most students will study three A level subjects over the course of Year 12 and 13 but studying four is possible. Students can choose to access a programme of pure linear A levels or Level 3 vocational courses, or they may opt to combine linear A levels with Level 3 vocational qualifications. Students will be given personalised advice in their one-to-one course placement meeting so they can make the right decisions about their most suitable pathway.

Entry requirements are as follows:

- **A Level Programme** – A minimum of 5 GCSEs at Grades 9-4 including with English Language and Maths
- **Vocational Programme** – A minimum of 4 GCSEs at grades 9-4, ideally with English Language and Maths.

The opportunity to re-sit English OR Maths will be available and compulsory for students who have not achieved a grade 4.

Please note: Ridgewood School reserves the right to review and amend these entry requirements and to consider the entry requirement for each student on an individual basis.

Course	Level	Subject Specific Entry Requirements
Applied Science BTEC National Diploma	Level 3	Minimum grade 4 GCSE in English Language and Maths plus an additional 3 GCSEs at grade 4 or above (of which 2 grades must be 4,4 in Combined Science)
Art, Craft & Design	Level 3 - A level	Minimum grade 4 GCSE in English Language and Maths plus an additional 3 GCSEs at grade 4 or above (one of which must be Art)
Biology A level	Level 3 - A level	Minimum grade 5 in English Language and grade 6 in Maths plus three grade 4s including grade 6 in Biology and grades 6 in either Chemistry or Physics, or grade 6,6 in Combined Science.
Business Cambridge Technicals	Level 3	Minimum grade 4 in English Language and Maths plus an additional two GCSEs at grade 4.
Chemistry	Level 3 - A level	Minimum grade 4 in English Language and grade 6 in Maths plus three grade 4s including grade 6 in Chemistry and grades 6 in either Biology or Physics, or grade 6,6 in Combined Science.
Computer Science	Level 3 - A level	Minimum grade 4 in English Language and grade 6 in Maths. Plus three grade 4s and grade 6 in Computer Science.
Construction and the Built Environment	Level 3 – BTEC National Extended Certificate	Minimum grade 4 in English Language and Maths plus two other GCSEs at least grade 4.
Digital Media	Level 3 – Cambridge Technical Extended Certificate	Minimum grade 4 in English Language and Maths. Plus four grade 4s.
Level 3 Mathematical Studies (Core Maths)	Level 3	Core Maths is an additional qualification to go alongside your three other A level options. This will help you stand out as it is an extra qualification on top of what other students may have. Minimum grade 4 in Maths.
Criminology	Level 3 - WJEP Diploma	Minimum grade 4 in English Language and Maths plus three other GCSEs at least grade 4.

continued >

Course	Level	Entry Requirements
Economics	Level 3 - A level	Minimum grade 5 in English Language and Maths. Plus three grade 4s.
Engineering	Level 3 – Foundation Technical Level	Minimum grade 5 in English Language and grade 4 in Maths. Plus three other grade 4s, including a technology subject at grade 5.
English Language	Level 3 - A level	Minimum grade 5 in English Language and grade 4 in Maths. Plus two grade 4s and a grade 5 in English Literature.
English Literature	Level 3 - A level	Minimum grade 5 in English Language and grade 4 in Maths. Plus two grade 4s and a grade 5 in English Literature.
French	Level 3 - A level	Minimum grade 5 in English Language and grade 4 in Maths. Plus three grade 4s including grade 7 in French.
Geography	Level 3 - A level	Minimum grade 5 in English Language and Maths. Plus three grade 4s including a grade 5 in Geography.
Health and Social Care BTEC Level 3 Diploma	Level 3 – BTEC Level 3 Extended Certificate/ Diploma	Minimum grade 4 in English Language and Maths. Plus four grade 4s.
History	Level 3 - A level	Minimum grade 5 in English Language and grade 4 in Maths. Plus three grade 4s including a grade 5 in History.
IT	Level 3 – Cambridge Technical	Minimum grade 4 in English Language and Maths. Plus three grade 4s.
Mathematics	Level 3 - A level	Minimum grade 4 in English Language and grade 6 in Maths. Plus three grade 4s, plus successful maths entry test.
Mathematics (Further)	Level 3 - A level	Minimum grade 4 in English Language and grade 7 in Maths. Plus three grade 4s.
Performing Arts	Level 3 – BTEC Extended Certificate	Minimum grade 4 in English Language and Maths. Plus two other grade 4s including either a Merit or a grade 5 in Dance, Drama, Performing Arts or Music.
Physics	Level 3 - A level	Minimum grade 4 in English Language and grade 6 in Maths. Plus three grade 4s including grade 6 in Physics and grade 6 in either Biology or Chemistry, or grade 6,6 in Combined Science.
Physics	Level 3 - A level	Minimum grade 4 in English Language and grade 6 in Maths. Plus three grade 4s including grade 6 in Physics and grade 6 in either Biology or Chemistry, or grade 6,6 in Combined Science.
Politics	Level 3 - A level	Minimum grade 5 in English Language and grade 4 in Maths. Plus three grade 4s.
Psychology	Level 3 - A level	Minimum grade 5 in English Language and grade 4 in Maths. Plus three grade 4s.
Religious Studies	Level 3 - A level	Minimum grade 5 in English Language and grade 4 in Maths. Plus three grade 4s.
Sociology	Level 3 - A level	Minimum grade 5 in English Language and grade 4 in Maths. Plus three grade 4s.
Sport & Physical Activity	Level 3 – Cambridge Technical Extended Certificate/Diploma	Minimum grade 4 in Maths and English Language. Plus four grade 4s.

What financial support can I obtain to study here?

In addition to the 16 – 19 Bursary, which is available to all post 16 students who meet certain eligibility criteria, students are encouraged to apply for and are supported in their applications for a range of scholarships available by universities and other academic or charitable organisations.

Links with businesses and the local labour market

All students, regardless of their course, will have experience with employers as well as developing key transferable employability skills, which we embed into our curriculum. Each subject will offer a number of meaningful encounters, either via visiting speakers or through visits to workplaces.

Students:

- Complete a week-long internship within a professional working environment:
www.ridgewoodschool.co.uk/internships
- Can be involved with the Young Enterprise programme at Ridgewood. The programme provides students with the opportunity to run their own business, source finance, manufacture a product and sell it to members of the public. Throughout the scheme, students work alongside large businesses, providing a fantastic opportunity to network and create useful contacts.
- Can work with the Careers and Enterprise Company who work in partnership with Doncaster Chamber and Careers Inc. The programme allows students to have access to key influencers and employers in the local labour market.



Sir Thomas Wharton (Maltby Collaborative)



Address: Sir Thomas Wharton Academy, Tait Ave,
New Edlington, Doncaster DN12 1HH
Maltby Academy, Braithwell Road, Maltby S66 8AB

Website: www.stwcc.co.uk/sixth-form
www.maltbyacademy.com

Twitter: @STWAcademy @MaltbyAcademy

Facebook: Post16@MaltbyLearningTrust

About the Provider:

Post 16 MLT offers an excellent educational provision. We pride ourselves in offering a 'personalised' approach to learning and a strong school community with clear links to progression and high quality employer engagement.

Post-16 MLT focus strongly on academic rigour, but in addition our team will help you harness your unique qualities to stand out from the crowd. This is really important in a competitive employment market. Making the choice to stay on at Post-16 @ MLT will allow you to develop the key skills and qualities demanded by employers and universities.

What we offer:

- Small Class Sizes and Personalised Lessons – We focus on you as an individual, you are never just a number to us.
- Personalised Timetables – Your student journey will be unique to you.
- Progression Routes - Our leavers progress to high quality higher education, higher level apprenticeships and employment opportunities. Our students have gone on to Oxbridge, Russell Group universities and other highly sought after destinations.
- Enrichment Opportunities - We have a broad and full enrichment programme that enhances and supports your experience.
- Excellent Teaching and Learning – Our experienced teachers have in-depth and up to date subject knowledge, providing you with high quality teaching and learning to help you achieve high outcomes and to go on to succeed in your chosen field.

Courses Offered:

The minimum entry requirement for all courses is at least 5 GCSEs at Grade 5 or above.

Course	Level	Entry Requirements
Applied Science	Level 3 - BTEC	GCSE English Language Grade 5, GCSE English Literature Grade 4, GCSE Mathematics Grade 5, GCSE Science Grades 4,5
Art and Design	Level 3 – A Level	GCSE English Language Grade 5, GCSE English Literature Grade 4, GCSE Mathematics Grade 5, GCSE Science Grades 5,4, GCSE Art Grade 6
Biology	Level 3 – A Level	GCSE English Language Grade 5, GCSE English Literature Grade 5, GCSE Mathematics Grade 6, GCSE Science Grades 6,5 (to include at least GCSE Biology or one GCSE Triple science at Grade 6).
Business	Level 3 – A Level	GCSE English Language Grade 5, GCSE English Literature Grade 4 , GCSE Mathematics Grade 5, GCSE Science Grades 5,4
Business Studies	Level 3 - BTEC	GCSE English Language Grade 5, GCSE English Literature Grade 4, GCSE Mathematics Grade 5, GCSE Science Grades 5,4

continued >

continued >

Course	Level	Entry Requirements
Chemistry	Level 3 – A Level	GCSE English Language Grade 5, GCSE English Literature Grade 5, GCSE Mathematics Grade 6, GCSE Science Grades 6,5
Computer Science	Level 3 – A Level	GCSE English Language Grade 5, GCSE English Literature Grade 4,, GCSE Mathematics Grade 6, GCSE Science Grades 5,4, GCSE Computer Science Grade 6
Criminology	Level 3 – AS Level A Level	GCSE English Language Grade 5, GCSE English Literature Grade 4, GCSE Mathematics Grade 5
Drama	Level 3 – A Level	GCSE English Language Grade 5, GCSE English Literature Grade 5, GCSE Mathematics Grade 5, GCSE Science Grades 5,4, GCSE Drama Grade 6
Economics	Level 3 – A Level	GCSE English Language Grade 5, GCSE English Literature Grade 4, GCSE Mathematics Grade 6, GCSE Science Grades 5,4
English Language and Literature	Level 3 – A Level	GCSE English Language Grade 5, GCSE English Literature Grade 5, GCSE Mathematics Grade 5, GCSE Science Grades 5,4
English Literature	Level 3 – A Level	GCSE English Language Grade 5, GCSE English Literature Grade 5, GCSE Mathematics Grade 5, GCSE Science Grades 5,4, GCSE History or Geography Grade 5
Extended Project Qualification (EPQ)	Level 3	GCSE English Language Grade 5, GCSE English Literature Grade 5, GCSE Mathematics Grade 5
Food Technology	Level 3 – A Level	GCSE English Language Grade 5, GCSE English Literature Grade 4, GCSE Mathematics Grade 5, GCSE Science Grades 5,4, GCSE Food Technology Grade 5
French	Level 3 – A Level	GCSE English Language Grade 5, GCSE English Literature Grade 4, GCSE Mathematics Grade 5, GCSE Science Grades 5,4, GCSE French Grade 6
English Language	Level 3 – A Level	GCSE English Language Grade 5, GCSE English Literature Grade 5, GCSE Mathematics Grade 5, GCSE Science Grades 5,4
Further Mathematics	Level 3 – A Level	GCSE English Language Grade 5, GCSE English Literature Grade 4, GCSE Mathematics Grade 7, GCSE Science Grades 5,4. Must be studied with A Level Maths.
Geography	Level 3 – A Level	GCSE English Language Grade 5, GCSE English Literature Grade 4, GCSE Mathematics Grade 5, GCSE Science Grades 5,4, GCSE Geography Grade 5
Health and Social Care	Level 3 - BTEC	GCSE English Language Grade 5, GCSE English Literature Grade 4, GCSE Mathematics Grade 5, GCSE Science Grades 5,4
History	Level 3 – A Level	GCSE English Language Grade 5, GCSE English Literature Grade 5, GCSE Mathematics Grade 5, GCSE Science Grades 5,4, GCSE History Grade 6
ICT	Level 3 - BTEC	GCSE English Language Grade 5, GCSE English Literature Grade 4, GCSE Mathematics Grade 5, GCSE Science Grades 5,4
Maths	Level 3 – A Level	GCSE English Language Grade 5, GCSE English Literature Grade 4, GCSE Mathematics Grade 7
Music	Level 3 – A Level /BTEC	GCSE English Language Grade 5, GCSE English Literature Grade 4, GCSE Mathematics Grade 5, GCSE Science Grades 5,4, GCSE Music Grade 5
Core Maths	Level 3 - equiv. to AS Level	GCSE English Language Grade 4, GCSE English Literature Grade 4, GCSE Mathematics Grade 5, GCSE Science Grades 5,4
Media Studies	Level 3 – A Level	GCSE English Language Grade 5, GCSE English Literature Grade 4, GCSE Mathematics Grade 5, GCSE Science Grades 5,4, GCSE Media Grade 5
Performing Arts	Level 3 – BTEC	GCSE English Language Grade 5, GCSE English Literature Grade 4, GCSE Mathematics Grade 5, GCSE Science Grades 5,4

continued >



continued >

Course	Level	Entry Requirements
Photography	Level 3 – AS Level	GCSE English Language Grade 5, GCSE English Literature Grade 4, GCSE Mathematics Grade 5, GCSE Science Grades 5,4. Must be studied with A Level Art
Physics	Level 3 – A Level	GCSE English Language Grade 5, GCSE English Literature Grade 5, GCSE Mathematics Grade 6, GCSE Science Grades 6,5 to include GCSE Physics Grade 6 OR one GCSE at Grade 6 in Trilogy Science
Product Design	Level 3 – A Level	GCSE English Language Grade 5, GCSE English Literature Grade 4, GCSE Mathematics Grade 5, GCSE Science Grades 5,4, GCSE in design subject Grade 5
Product Design	Level 3 – A Level	GCSE English Language Grade 5, GCSE English Literature Grade 4, GCSE Mathematics Grade 5, GCSE Science Grades 5,4, GCSE in design subject Grade 5
Psychology	Level 3 – A Level	GCSE English Language Grade 5, GCSE English Literature Grade 5, GCSE Mathematics Grade 5, GCSE Science Grades 5,5
Sociology	Level 3 – A Level	GCSE English Language Grade 5, GCSE English Literature Grade 5, GCSE Mathematics Grade 5, GCSE Science Grades 5,4
Spanish	Level 3 – A Level	GCSE English Language Grade 5, GCSE English Literature Grade 4, GCSE Mathematics Grade 5, GCSE Science Grades 5,4, GCSE Spanish Grade 5
Sport	Level 3 – BTEC	GCSE English Language Grade 5, GCSE English Literature Grade 4, GCSE Mathematics Grade 5, GCSE Science Grades 5,4
Financial Studies	Level 3 Certificate	GCSE English Language Grade 4, GCSE English Literature Grade 4, GCSE Mathematics Grade 5, GCSE Science Grades 5,4
Duke of Edinburgh Gold Award	N/A	GCSE English Language Grade 4, GCSE English Literature Grade 4, GCSE Mathematics Grade 5, GCSE Science Grades 5,4
Sports leaders	Level 3	GCSE English Language Grade 4, GCSE English Literature Grade 4, GCSE Mathematics Grade 5, GCSE Science Grades 5,4
Sport	Level 2 BTEC	Students who wish to follow this route will be given personalised guidance with regards to qualifications.
ICT	Level 2 BTEC	Students who wish to follow this route will be given personalised guidance with regards to qualifications.
Health and Social Care	Level 2 BTEC	Students who wish to follow this route will be given personalised guidance with regards to qualifications.



What Financial Support can I obtain to study here?

The MLT Football Scholarship

In conjunction with Sheffield United FC Post 16 MLT operate a football scholarship for talented footballers who also wish to continue with their Level 3 studies. It is a unique offer as students come to us to progress academically through their A levels or BTEC studies and develop with their skills in football. Students can complete:

- Academic study
- Football Education
- Physical, technical and tactical development
- FA level 1 Coaching
- Playing in British College's League

Do they share provision with other providers?

Sir Thomas Wharton is part of the Maltby Learning Trust and shares Post 16 provision with Maltby Academy. Students can access a shuttle minibus free of charge to travel between lessons on both campuses (6 minutes between each campus).

Links with businesses and the local labour market

We work closely with the Chamber of Commerce for the local area and this provides links to industry for students to access. Students are able to take part in leadership opportunities linked with the local area and undertake mock interviews with local business people. Students are also able to take part in drop down day activities linked to employers and providers.





Trinity Academy



Address: Church Balk, Thorne, Doncaster DN8 5BY
Website: trinity-academy.org.uk/sixth-form/prospectus/
Twitter: twitter.com/trinitythorne?lang=en
Facebook: www.facebook.com/TrinityAcademyThorne/

About the Provider

Trinity Sixth Form offers 16 to 19 year olds a challenging learning environment where academic excellence, character development through leadership training and high quality destinations support are central to what our teachers do to develop brilliant young people.

Courses Offered:

Course	Level	Entry Requirements
Fine Art	Level 3 - A Level	Grade 5 or above in GCSE Art and Design or Textile Design.
Art and Design: Textile Design	Level 3 - A Level	Grade 5 or above in GCSE Art and Design or Textile Design.
Biology	Level 3 - A Level	Grade 6 or above in GCSE Biology or Grade 6 or above in GCSE Combined Science (with a minimum of Grade 6 achieved in Biology components). Grade 6 in GCSE Mathematics and English.
Business studies	Level 3 - A Level	Grade 6 or above in GCSE Business Studies
Chemistry	Level 3 - A Level	Grade 6 or above in GCSE Chemistry or Grade 6 or above in GCSE Combined Science (with a minimum of Grade 6 achieved in Chemistry components). Grade 6 in GCSE Mathematics and English.
Computer Science	Level 3 - A Level	Grade 6 or above in GCSE Computer Science and grade 6 in GCSE Mathematics.
Dance	Level 3 - A Level	Grade 6 or above in GCSE Dance.
Drama and theatre studies	Level 3 - A Level	Grade 5 or above in GCSE English and grade 6 in GCSE Drama.
Economics	Level 3 - A Level	Grade 6 or above in GCSE English and GCSE Mathematics.
English Language and literature	Level 3 - A Level	Grade 6 or above in both GCSE English language and GCSE English literature.
English literature	Level 3 - A Level	Grade 6 or above in both GCSE English language and GCSE English literature.
Extended Project Qualification	Level 3	Grade 6 or above in GCSE English.
Film studies	Level 3 - A Level	Grade 6 or above in GCSE English and GCSE French.
French	Level 3 - A Level	Grade 5 or above in GCSE English or GCSE English literature.
Geography	Level 3 - A Level	Grade 6 or above in GCSE Geography.
German	Level 3 - A Level	Grade 6 or above in GCSE English and GCSE German.
History	Level 3 - A Level	Grade 6 or above in GCSE History
Law	Level 3 - A Level	Grade 6 or above in GCSE English and GCSE Mathematics.
Maths	Level 3 - A Level	Grade 6 or above in GCSE Mathematics.

continued >

continued >

Course	Level	Entry Requirements
AS Mathematics (core)	Level 3 - AS level	Grade 5 or above in GCSE Mathematics.
Further Maths	Level 3 - A level	Grade 8 or above in GCSE Mathematics. Grade 7 with discussion. To be taken in conjunction with A level Mathematics.
Further Maths	Level 3 - AS level	Grade 8 or above in GCSE Mathematics. Grade 7 with discussion. To be taken in conjunction with A level Mathematics.
Media Studies	Level 3 - A level	Grade 5 or above in GCSE English.
Music	Level 3 - A level	Grade 6 or above at GCSE. It is important that students have passed Grade 5 Theory / Instrument / Singing or are of that standard by the time they begin the course.
Physics	Level 3 - A level	Grade 6 or above in GCSE Physics or Grade 6 or above in GCSE Combined Science (with minimum of Grade 6 achieved in Physics components). Grade 6 in GCSE Maths
Politics	Level 3 - A level	Grade 6 or above in GCSE English.
Product Design	Level 3 - A level	Grade 5 or above in a Design Technology subject.
Psychology	Level 3 - A level	Grade 6 or above in GCSE English and GCSE Mathematics.
Religious Studies	A level	Grade 6 or above in GCSE Religious Studies.
Business: Extended Certificate	3	28 points from 7 GCSE's
Children's Play, Learning and Development: Extended Certificate	3	5 GCSE passes, grade 5 in English language and 9-4 in preferably Health and Social Care / Child Development.
Digital Games Design and Development: Extended Certificate	3	28 points from 7 GCSE's
Applied Certificate in Food Science and Nutrition	3	28 points from 7 GCSE's
Health and Social Care: Extended Certificate and Diploma	3	Grade 5 or above at GCSE English or a Merit or above in BTEC Level 2 in Health and Social Care.
Travel and Tourism: Subsidiary Diploma	3	28 points from 7 GCSE's
Applied certificate in science	3	Grade 5 or above in GCSE English and GCSE Mathematics, Grade 5/5 or above in Science.
Sport: Diploma	3	Grade 5 or above in GCSE English and/or GCSE PE. Merit or above in Level 2 BTEC Sport.
Work Skills: Level 2 Extended Certificate	2	Teacher reference

Do they share provision with other providers?

No

What Financial Support can I obtain to study here?

Details of bursary arrangements are available here:
www.trinity-academy.org.uk/wp-content/uploads/2018/03/16-19-Bursary-Policy-Trinity-Academy.pdf

Links with businesses and the local labour market

These can be found here:
www.trinity-academy.org.uk/careers-welcome/careers-programme/

XP School



Address: XP School, Weston Road, Doncaster DN4 8ND

Website: www.xpschool.org follow the XP16 link and the website for XP16 will be live on Friday 29th November 2019: www.post16atxp.org/

Twitter: twitter.com/xpschool?lang=en

Facebook: www.facebook.com/XPschool/

Head of XP16: Mrs D Rigby / drigby@xpschool.org

Provider Description:

XP16 continues in following our world acclaimed, highly successful expeditionary teaching and learning model, which all XP Trust schools follow - from primary to post-16 provision. Together with our strong ethos, as you work hard to get smart, while being kind. We focus relentlessly on character growth and beautiful work as well as delivering rigorous qualifications. All XP16 staff are highly experienced in expeditionary and thematic teaching, creating a curriculum which is student centred, personalised and delivered in small class sizes.

The XP16 Diploma pathways are co-constructed by the student, parents and XP16 and are based around three central, reflective questions:

- What do I enjoy?
- Who do I want to become?
- Where do I want to go?

Building on these questions our successful and unique curriculum offers you excellence in:

- taught academic qualifications
- expeditions with beautiful work
- character growth
- "crew" support

At XP16 all students participate in a daily 45-minute crew character growth session. This wrap-around support enables us to relentlessly focus on each and every student becoming the very best version of themselves. Although each Diploma pathway is different, all are equally as rigorous, tailor made, and each offer will be a completely personalised learning experience which will ensure all our students are fully prepared to be successful in the modern world.

Whether you are an XP/XPEast or an external student applicant, whatever your path, wherever you want to go, whoever you want to become, at XP16 we will support you to be the best version of you.

Courses Offered:

XP16 offers four Diploma pathways with the following entry requirements:

XP16 Oxbridge & Russell Group (ORG)

Five 7 – 9 Grades at GCSE (with at least a Grade 6 in English and Maths)

Some ORG University courses require higher GCSEs Grades e.g., Dentistry, Medicine and Veterinary

On this pathway you will study 3 or 4 A Levels, plus the EPQ Programme.

XP16 University & Higher Education

Five 5 – 9 Grades at GCSE (with at least a Grade 5 in English and Maths)

On this pathway you will study the equivalent programme of 3 or 4 A Levels or BTEC Level 3 plus EPQ Programme.

XP16 Blend

Five 5 – 9 Grades at GCSE (with at least a Grade 4 in English and Maths)

On this pathway you will study 3 or 4 Subjects (combination of A Levels and BTECs) EPQ Programme - by invitation

or

XP16 Internship Academy Diploma in collaboration with our partners, Club Doncaster, Doncaster College and Higher Rhythm.

Higher Rhythm 2 days a week and 3 days a week at XP16 studying the expeditionary part of our Diploma and GCSE English and/ or Maths retakes (if Grade 4 or above is not achieved)

Doncaster College & XP16 studying the expeditionary part of our Diploma and GCSE English and/ or Maths retakes (if Grade 4 or above is not achieved)

Club Doncaster 3 days a weeks and 2 days a week at XP16 studying the expeditionary part of our Diploma and GCSE English and/ or Maths retakes (if Grade 4 or above is not achieved)

XP16 Vocational

Five 4 – 9 Grades at GCSE or equivalent BTEC qualifications. On this pathway you will study the equivalent of 2 or 3 vocational BTEC and GCSE English and/ or Maths retakes as appropriate (if Grade 4 or above is not achieved)

or

XP16 Internship Academy Diploma (see above)

Students making applications to **XP16 Internships Academy** will also need to attend an interview with our partnership providers for their chosen course.

Course	Subject specific entry requirements 2020/21
A-Level Art & Design	Grade 6 Art (or Grade 6 in a related creative subject) and Grade 4 in English Language
A-Level Biology	Grade 6 Biology or Grade 7-7 Combined Science, Grade 5 English Language, Grade 6 Maths
A-Level Business	Grade 4 English Language and Grade 5 Maths
A-Level Chemistry	Grade 6 Chemistry or Grade 7-7 Combined Science, Grade 5 English Language, Grade 6 Maths,
A-Level Computer Science	Grade 4 English Language and Grade 6 Maths (if Computer science is studied at GCSE then a Grade 6 will be needed but it is not a prerequisite of the offer)
Drama	Grade 5 English Language
A-Level English Language/ Literature	Grade 5 English Language or Grade 5 English Literature
A-Level English Language	Grade 5 English Language or Grade 5 English Literature
A-Level English Literature	Grade 5 English Language or Grade 5 English Literature
A-Level Geography	Grade 5 English Language, Grade 6 Geography or Grade 6 English Language if Geography was not studied at GCSE and Grade 4 Maths (GCSE Geography is not a prerequisite to study at A Level)
A-Level History	Grade 5 English Language and Grade 6 History or Grade 6 English Language if History was not studied at GCSE. (GCSE History is not a prerequisite to study at A Level)
A-Level Maths	Grade 7 Maths and Grade 4 English Language
A-Level Further Maths	Grade 8 Maths and Grade 4 English Language

continued >



continued >

Course	Level	Entry Requirements
A-Level Media		Grade 5 English Language or Grade 5 English Literature
BTEC Level 3 Music		Grade 5 English Language, Grade 5 Music (if studied at GCSE) or Grade 5 standard in practical and theory
BTEC National Diploma course in Music Technology		This course is part of the Internship Academy Diploma and places are limited to 24. Five 4 – 9 Grades at GCSE or equivalent BTEC qualifications
A-Level Photography		Grade 4 English Language and Grade 5 or a Merit BTEC in a creative subject
A-Level Physics		Grade 7 Physics or Grade 7-7 Combined Science, Grade 5 English Language and Grade 6 Maths
A-Level Politics		Grade 5 English Language, a Grade 5 in any humanities subject
Level 3 Product Design		Grade 4 English Language and Grade 5 Maths, Grade 6 Physics or Grade 6-6 in Combined Science (Grade 4 in Design & Technology if studied at GCSE)
A-Level Psychology		Grade 5 English Language, Grade 5 Maths and Grade 5-5 Combined Science
BTEC Sport L3		Grade 4 English and Science. Desirable PE GCSE Grade 5. Shows an interest and talent in Sport/ in core PE and after school activities.
A-Level Sociology		Grade 5 English Language and/or literature
A-Level Spanish		Grade 6 English Language and Grade 7 Spanish

Please Note

Our course offer is dependent on the number of students interested in studying the course. If you are interested in a course which is not listed, please specify this on your application form

Conditional offers XP/XPE students

Students will receive a conditional offer following interviews with the Head of XP16. Students who do not meet their chosen Diploma pathway and the subject specific entry requirements, may be offered the opportunity to study on an alternative pathway and their chosen course depending on; full engagement with the XP16 Transition Programme, HOWLs of at least 3.0 and a letter of recommendation from the subject course leader.

Conditional offers external students

Students will receive a conditional offer following interviews with the Head of XP16. Students who do not meet their chosen Diploma pathway and the subject specific entry requirements, may be offered the opportunity to study on an alternative pathway and their chosen course depending on; full engagement with the XP16 Transition Programme and a further interview with XP/XPEast subject course leader.

Both XP & XPEast schools are oversubscribed. Our Y12 cohort intake for 2020/21 is 50 places, so please ensure your applications are submitted before the January deadline to avoid disappointment.

Do they share provision with other providers?

We work in close collaboration with Club Doncaster, Doncaster College and Higher Rhythm to deliver some elements of our course offer for XP16 Blend and XP16 Vocational students. This gives them access to state-of-the-art facilities and cutting-edge career and industry provision. This excellent opportunity also provides a full range of additional support which makes this course unique, offering music release, digital distribution, radio broadcast opportunities, live events, masterclasses and more.

What financial support can I obtain to study here?

XP16 16-19 Bursary Funding follows GOV.UK guidelines means tested and discretionary bursaries. We also offer support on an individual basis which should be discussed with the Head of XP16 in the first instance. Student/parents will not be asked to subsidise any trips, visits or residentials which have been written into their personalised Diploma programme.

Links with businesses and the local labour market

XPTrust proudly boasts extensive links with businesses and the local labour market. Our presentation of learning events, celebrates each expedition with invitations to experts, parents and stakeholders alike. Local business people sit on all our presentation of learning panels and will be involved in mentoring and mock interviews. Other support includes:

- ASDAN Careers and Experiencing Work Short Course - Gatsby mapped (<https://www.asdan.org.uk/courses/programmes/careers-experiencing-work-short-course>)
- Work shadowing
- Dedicated careers guidance (including support from external careers advisors)
- One-to-one mentoring
- CV and personal statement advice and support
- Interview practice and preparation
- Mock 'assessment day'
- University, Employment, Apprenticeship and Gap Years application support
- A citizenship and democracy programme.
- A personal wellbeing programme.
- A study skills programme
- An Independent living programme

Training Providers

There are a substantial range of training providers available in Doncaster. The list below is not comprehensive and there are more available. **Remember to check the Start Platform (including the local digital apprenticeship finder) and online if you cannot find a provider that meets your needs.**

Training Provider Name	Training Provider Website and Address	Courses Offered
Armonia Training Academy	www.armonia.co.uk/training-academy/home/ 16 High St, Hatfield, Doncaster DN7 6RY	NVQ Level 2 Diploma in Beauty Therapy NVQ Level 3 Diploma in Beauty Therapy NVQ Level 2 Diploma in Hairdressing Also: Apprenticeship Training.
DCLT – Doncaster Culture and Leisure Trust	www.dclt.co.uk/courses-training/ Rossington, New Rossington, Doncaster DN11 0DR	Apprenticeships in: Customer Services Leisure Management Leisure Operations Operations Management
Club Doncaster Sports College	www.clubdoncastersportscollege.co.uk/ Keepmoat Stadium, Stadium way, Doncaster DN4 5JW	Level 2 Diploma in Health and Fitness Level 2 Diploma in Active Leisure BTEC Level 3 Sport
Doncaster Rotherham and District Motor Traders GTA Ltd.	www.doncastergta.co.uk/ Rands Lane Industrial Estate, Armthorpe, Doncaster DN3 3DY	Apprenticeships offered in: Business Administration Customer Service Vehicle Maintenance and Repair - Light Vehicle Vehicle Maintenance and Repair - Heavy Vehicle Vehicle Maintenance and Repair - Auto-Electrical . Vehicle Maintenance and Repair – Motorcycle Vehicle Fitting Competence Vehicle Fitting - Specialist Tyre Fitting Vehicle Body and Paint - Body Building Vehicle Body and Paint - Body Repair Vehicle Body and Paint - Body Refinishing Bus and Coach Engineering and Maintenance – Mechanical Bus and Coach Engineering and Maintenance - Electrical Bus and Coach Engineering and Maintenance - Body Vehicle Parts Warehousing and Storage

continued >



continued >

Training Provider Name	Training Provider Website and Address	Courses Offered
Engage Training and Development	www.engagetd.com/ 2 Duke St, Doncaster DN1 3EA	Specialised Engage Traineeship Programme (6 month, customised training and work placement based qualification) Apprenticeships (Various)
Higher Rhythm	www.higherrhythm.co.uk/ 53-57 Nether Hall Rd, Doncaster DN1 2PG	HND Music Technology and Sound Engineering – BTEC HND (2 Years) Bronze Arts Award – Music Technology Level 3 BTEC OND Diploma (Study Programme) in Music Technology
Independent Training College (ITS)	www.independenttrainingcollege.co.uk/ The Medical Centre, Frances St, Doncaster DN1 1JS	Employability Skills (3-24 Months) Work Experience Programmes GCSE English GCSE Mathematics Functional Skills English Functional Skills Mathematics Apprenticeships in: Accounting and Finance Business Administration Customer Service Health & Social Care Management
Intertrain	www.railway-training-courses.com/ Intertrain (UK) LTD, Balby Court Business Campus, Balby Carr Bank, Doncaste DN4 8DE	Rail and Construction Industry-specific courses. Apprenticeships: Level 2 Rail Engineering Operative Level 3 Rail Engineering Technician
Morthyng Vocational College	www.morthyng.co.uk/mvc-doncaster-centre/ 65 – 67 Silver Street, Doncaster DN1 1JL	BTEC Award in Business Administration Entry Level 3 BTEC Award, Certificate and Diploma in Business Administration Level 1 NVQ Award and Certificate Business Administration Level 1 NVQ Award, Certificate and Diploma Business Administration Level 2 BTEC Award in Introduction to Retail Skills Entry Level 3 BTEC Award and Certificate in Retail Knowledge Level 1 BTEC Award, Certificate and Diploma in Retail Skills Level 1 BTEC Award, Certificate and Diploma in Retail Skills Level 2 BTEC Award and Certificate for IT Users (ITQ) Entry Level 3 BTEC Award, Certificate and Diploma for IT Users (ITQ) Level 2

continued >

continued >

Training Provider Name	Training Provider Website and Address	Courses Offered
National Horseracing College	www.thenhc.co.uk/nhc-courses/ The Stables, Great North Road, Doncaster DN11 0HN	Various Jockey, Horse racing and stable staff courses.
Oracle Training Consultants Ltd.	www.oracle-uk.com/ 65-67 Silver St, Doncaster DN1 1JL	Various Beauty Short Courses
Total Training Provision	www.total-tp.com/contact-us/ Total Training Provision, Third Floor, Silver House, 18-20 Silver Street, Doncaster DN1 1HL	Various apprenticeships, including: Learning Mentor Level 3 Adult Care Worker Level 2 Lead Adult Care Worker Level 3 Early Years Educator Level 3 Teamleading Level 3 Customer Services Level 2 & Level 3 Administration Level 3 Teaching Assistant Level 3 English Level 2 Mathematics Level 2
White Rose Beauty	www.whiterosebeautycolleges.co.uk/ 7 Thorne Rd, Doncaster DN1 2HJ	ITEC Beauty Specialist Diploma, ITEC Facial Electrical Treatments Diploma, ITEC Diploma in Epilation ITEC Level 3 Diploma in Beauty Therapy Extra Option: ITEC Diploma in Nail Technology VTCT N.V.Q. in Nail Services, Level 2 and Level 3
YMCA Training	www.ymcatraining.org.uk/ Unit 1 and 2, Trafford Way, Doncaster DN1 1PN	Level 1 Business Administration Level 2 Business Administration Level 1 Caring for Children Level 2 Introducing Caring for Children and Young People Level 1 in Customer Services Level 2 in Customer Services Level 2 in Health, Fitness and Exercise Instruction Level 3 in Health, Fitness and Exercise Instruction Level 1 - Introduction to Health, Social Care and Children and Young People Settings Level 2 - Preparing to work in Health and Social Care Level 1 - Practical Horticultural Skills Level 1 - Vehicle Maintenance Systems Level 1 - Public Services GCSE English
QPD - Quality Personal Development (Armed Forces Preparation)	www.forcesprep.co.uk/ Deaf Trust, Leger Way, Doncaster DN2 6AY	Military Preparation Course (MPC)







Doncaster
Council

Where can I go to access further information and support?

Careers information, Advice and Guidance – Start Doncaster –
(remember to register using a Doncaster postcode)

www.startindoncaster.com

The National Careers Service – **<https://nationalcareers.service.gov.uk/>**
including the course directory at:

<https://nationalcareers.service.gov.uk/find-a-course>

Doncaster Council Participation and Engagement Service –
01302 862150 (10am-4pm)

To see what support you and your family can access in your local area, visit:

**[www.doncaster.gov.uk/services/schools/
local-offer-preparing-for-adulthood-post-16](http://www.doncaster.gov.uk/services/schools/local-offer-preparing-for-adulthood-post-16)**



Find us on social media